

## How To Tie My Tie



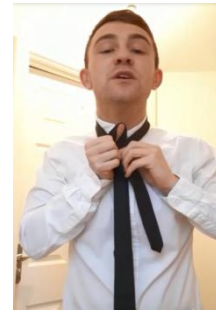
1. Make sure the thicker part of your tie is longer than the thinner part.



2. Hold onto the shorter part and take the wider part around it and stop.



3. Take it around the shorter part of your tie again and stop.



4. Take the wider part up past the back of the tie and flip it over the front.



5. Find the hole you made with your tie and tuck the wider part into it, pull gently whilst holding onto the knot.



**Finished!**

**Remember**

'Around and around, up, then down.'